

EX450

Titan



Click here to see a 360° animation on our website ...

The ultimate play system for children of all ages

The Titan play system is one of the ultimate play systems in the **Explore** universe. The play system is divided into zones, so that several play activities can take place simultaneously, and so that several age groups can play at the same time without disturbing each other. Titan has play elements that address all aspects of child development – cognitive, social, emotional, motor and, not least, physical. The Titan play system incorporates, for example, different suspension bridges, a helicopter panel with a dome window, a rope tunnel, a slide, countless play panels and, in particular, a designated play area for toddlers. Please read more below.

Specially developed play area for toddlers

Titan has a special play area for the smallest children. Here, they are able to immerse themselves in play activities which train their fine motor skills. On the outside are the sand panel and kitchen panel, and under the platform is a space that functions as a den. The low step height ensures that even the smallest children are able to climb up onto the platform. The large window on the right-hand side encourages children to consider the world from a slight distance and engage in social play, while the activity panel on the uppermost step provides a range of fun activities with moving parts. Playing on the sensory panel strengthens children's fine motor skills, and all the different handles and moving shapes stimulate their sense of touch. The panel window also makes it possible to interact with children in the kitchen below. A space has been created here with activities that promise hours of fun for younger children.

LEDON Explore is your guarantee of a high-quality playgrounds



Click here to see more about the product on our website:
<https://www.ledonplay.com/product/ex450/>

Specifications



Order number
EX450



Product dimensions (LxWxH)
867 x 821 x 391 cm



Area requirement incl. safety distances (LxW)
1159 x 1088 cm



Maximum fall height
225 cm



Age recommendation
From 2 years



Approximate installation time
2 persons 24 hours

Why choose LEDON:



Danish design and production



Playground equipment developed in cooperation with children



Low maintenance playgrounds



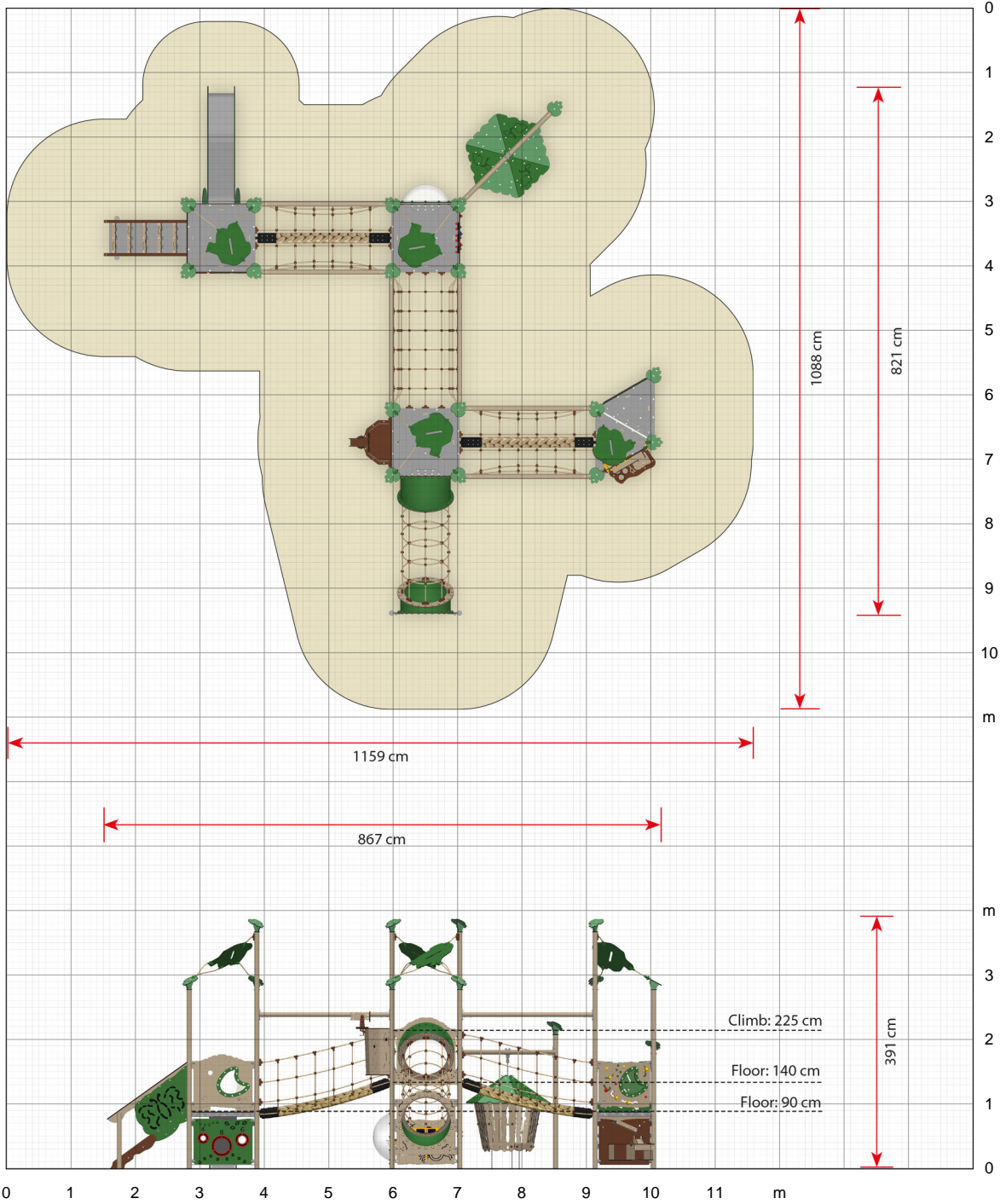
Made with sustainable materials

EX450

Titan



Scale 1:100 (when printed in 100%)



Click here to see more about the product on our website:
<https://www.ledonplay.com/product/ex450/>



Phone: +45 7482 6565
info@ledonplay.com, www.ledonplay.com

Production / Administration:
Vestergade 25, DK-6510 Gram

Sales / Marketing / Product Development:
Nordkajen 21, DK-6000 Kolding